



Examen VSBO PKL

2018

tijdvak 1
woensdag 16 mei
07.30 - 10.00 uur

Engels

Naam kandidaat _____ Kandidaatnummer _____

Beantwoord alle vragen in dit opgavenboekje.

Bij dit examen hoort een bijlage.

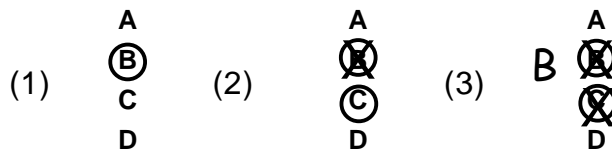
Dit examen bestaat uit 41 vragen.

Voor dit examen zijn maximaal 50 punten te behalen.

Voor elk vraagnummer staat hoeveel punten met een goed antwoord behaald kunnen worden.

Multiple choice

- Circle the letter of the correct answer (example 1).
- Indicate corrections clearly (examples 2 and 3).



Answer all open-ended questions in English.

Text 1 What is the right pet for you?

- 1p 1 What does the writer of the article want to achieve with the many questions?
The goal here is to
A help the reader fill out a survey of questions.
B make the reader reflect on his own situation.
C warn the reader about the dangers of having a pet.
- 1p 2 The paragraph that follows the list of questions ends with the sentence:
'Here are some extra pointers.'
Which word could be used instead of *'pointers'* here?
A dogs
B doubts
C risks
D tips
- 1p 3 The writer suggests you should get insurance for your purebreds because
A large dogs can cause a lot of damage to people's property.
B they require a lot of care, which might be expensive.
C you will have to spend a lot of money on food.

Text 2 Advice for a good job interview

- 1p 4 This article contains tips for people going to job interviews.
What is the main advice that is given in the article?
A Have a set of good questions to ask the employer.
B Impress the employers with your confident appearance.
C Make sure to find out how much money you will earn.
- 1p 5 Paragraph 5 ends with: *'If they say, "You have to be creative", then you will probably be working alone most of the time. If they say, "You have to be cooperative", then it could mean the opposite.'*
What would be a good ending there if you replace *'the opposite'*?
A *'... then it could mean you have to be the manager.'*
B *'... then it could mean you have to work in a team.'*
C *'... then it could mean you will get a part-time job.'*
- 1p 6 Paragraph 6 ends with: *'... consider it a red flag.'*
What is meant by *'a red flag'* here?
A a command
B a decoration
C a recommendation
D a warning

Text 3 The world's saddest polar bear?

Read the text and choose the correct options to fill the gaps.

- 1p 7
A help
B transfer
C transport
- 1p 8
A enclosure
B group
C tree

1p 9
A diminishing
B increasing
C promoting

1p 10
A fight
B grow
C socialize

1p 11
A contact
B other bears
C risks

1p 12
A less than
B more than
C only

1p 13
A decision
B space
C trip

Text 4 World dumps huge amounts of plastic into oceans

1p 14 How does the amount of plastic in the ocean — 8.8 million tons — compare to numbers previously given, according to the introduction (paragraph 1)?
The number of 8.8 million is
A higher than the previous number.
B lower than the previous number.
C the same as the previous number.

- 1p 15 Paragraph 4 refers back to the amount of plastic mentioned in the introduction.
Jambeck suggests here that the 8.8 million she found in her study
A may be higher than the real number.
B may be lower than the real number.
C may become less in the coming years.
- 3p 16 According to paragraph 4, plastic waste is an important worldwide issue.
→ Name the three reasons paragraph 4 gives why plastic waste is an important issue. *Use a maximum of 20 words for the complete answer.*
- 1
- 2
- 3

Text 5 Tigers cuddle with apes

- 1p 17 What does paragraph 1 suggest with respect to tigers cuddling apes?
A Normally this only occurs in the wild.
B This is quite normal behavior for tigers.
C This is very uncommon behavior for tigers.
- 1p 18 Why did the zookeepers put the apes together with the tigers? (*par. 1*)
A Because these animals love to be close to other animal species.
B Because these groups of animals live close together in the wild, too.
C Because they thought the animals were lonely and would like being together.
D Because they thought the tigers and the apes were in fact related animals.
- 1p 19 What was the similarity in the situation of the tiger cubs and that of the baby apes, according to paragraph 1?

.....

- 1p 20 What was it that proved to Suwarni that Demis treated Nia as another tiger, according to paragraph 2?
-
- 1p 21 Paragraph 3 states: '*...their natural instincts started showing*'. What does this mean here?
- A The animals began to behave as if in the wild.
 - B The animals no longer liked being together.
 - C The animals started to hunt each other.
 - D The animals were no longer small.
- 1p 22 The first sentence of paragraph 3 contains a gap with a capital **X**. Which word could be used there, to connect the first part and the second part of the sentence?
- A because
 - B but
 - C so
 - D while

Text 6 Belle of the wall

- 1p 23 What helped the most to make Shanan decide to start creating wallpaper?
- A her divorce and her empty apartment
 - B her exhibition at a home-design show
 - C her job as a senior designer at Express
- 1p 24 Paragraph 4 states, '*I've found it can be a big, scary commitment,.....*'
 → What can be scary, according to Shanan?
Complete the following with a maximum of 10 words:

Deciding

.....

- 3p 25 The four paragraphs of this article can have headings.
Below you will find five headings.
→ Indicate which heading belongs to which paragraph.
Write down the paragraph number in the box behind the correct heading.
Attention: One heading does NOT fit anywhere, so leave that box empty!

heading	paragraph number
Enormous	
More than wallpaper	
Prize winning designs	
Process	
Water	

Text 7 KiT killing it at Werfpop

- 1p 26 Which word in paragraph 1 indicates that KiT's performances were very good? Write down that one word from paragraph 1.

.....

- 2p 27 Read paragraphs 2 and 3.
→ Indicate if the following statements are true or false according to paragraphs 2 and 3, by putting X-marks in the appropriate boxes.

statement	true	false
KiT's playing attracted more and more people during the concert.		
From the start of the concert there were lots of people in the audience.		
The audience liked KiT's music because it has Dutch roots.		

- 1p 28 Which word in paragraph 3 indicates that you really want to join in when you listen to KiT performing? Write down that one word.

.....

- 1p 29 Which other word for ‘*audience*’ is used in the article?
Write down that one word.

.....

Text 8 From tech exec to aerialist

- 1p 30 Why did Beverly Sobelman leave her job at Microsoft, according to the information in paragraph 1 and 3?
- A She wanted to become a yoga teacher.
 - B She wanted to become an aerialist.
 - C She wanted to change her life.
 - D She wanted to manage people.
- 1p 31 Paragraph 2 refers to Sobelman’s trial session of midair acrobatics. What was the result of that session?
- A She appeared to be good at it from the start.
 - B She got scared of doing the movements.
 - C She immediately fell in love with it.
- 1p 32 What is suggested in paragraph 2 about Sobelman’s teacher? The teacher enjoyed working with Sobelman because
- A she already spoke French, which was easy.
 - B she was a bit older than his usual students.
 - C she was young, compared to his other students.
- 1p 33 Paragraph 4 contains an expression that refers to ‘*a nervous feeling of fear*’.
→ Which expression is that?

.....

Text 9 Fight silence with silence?

- 1p 34 In the second paragraph, the writer of the letter uses the phrase *'I am tired of it'*.
→ Copy another phrase from that paragraph that expresses the same feeling.

.....
.....

- 1p 35 According to the answer, what is the thing that the mom should do?
The mom should
A insist on her son contacting her.
B reach out more to her 'forgetful' son.
C respect her son's distant behavior.

- 1p 36 The final sentence ends with *'does not'*.
What could be written instead of the dots here?
A bring you happiness
B depend on you
C have to end like this

Text 10 Magical nights for Harry Potter and Hobbit fans

- 1p 37 What is the name of the hotel for Harry Potter fans?

.....

- 1p 38 What is said in the article about the food in the hotel for Harry Potter fans?
A It is special 'Harry Potter' food, with potions.
B The hotel prepares your food in the fireplace.
C The hotel serves regular English food.
D You can eat Bertie Bott's Every Flavour Beans.

- 3p 39 Indicate if the following statements are true or false, based on the information in the article, by putting X-marks in the appropriate boxes.

statement	true	false
The Harry Potter films were partially shot in the hotel in London.		
You have to call the hotel to check the prices of the Harry Potter rooms.		
You can dress up as a wizard during your stay in a Harry Potter room.		
The Hobbit houses look the way they were described in books of fiction.		

- 1p 40 What is special about the Hobbit houses, according to the article?
- A They all contain Hobbits.
 - B They are all different in size.
 - C They are in fact underground.
 - D They contain Tolkien's books.

Text 11 What's on?

This is part of the '*What's on*' page for the city of Nottingham. It contains six adverts for activities and events (A-F).

- 3p 41 Indicate if the following statements are true or false, based on the information in the six adverts. *Use X-marks.*

statement	true	false
Entrance to the sci-fi festival is free for people over 65.		
For the musical Oliver, you can buy tickets online.		
If you want to participate in the skating marathon, you need to sign up first.		
Leicester Tigers is the name of a football team.		
The Shepton market has a historic theme.		