



# Scoring instructions VSBO PBL

# 2025

period 1

Wednesday May 21

7.30 - 9.30 am

**Biology**

## **Submitting scores**

Process scores of all candidates in the online AWP program.

The scores must be posted no later than Monday June 2, 2025 at 12.00 noon.

The scoring instructions comprise:

- 1 Assessment standards
- 2 General rules
- 3 Subject-specific rules
- 4 Appraisal model

## 1 Assessment standards

---

The candidate's work is assessed with due observance of articles 30, 31 and 32 of the National Examination Decree vwo-havo-vsbo of 23-06-2008, PB 2008 no 54.

The following passages from the articles of the National decree mentioned above are of essence:

- 1 The school principal submits the completed exam assignments including a copy of the exam questions, the scoring instructions and the official report of the exam to the examiner. The examiner evaluates the work and submits it to the principal along with his/her evaluation. The examiner applies the assessment standards and the appraisal model decreed by ETE (the Examination Bureau).
- 2 The principal immediately submits the deposited exams, including a copy of the exam questions, the scoring instructions and the official report of the exam to the external examiner.
- 3 The external examiner promptly evaluates the work, applying the appraisal model and the assessment standards decreed by ETE (Examination Bureau).
- 4 The examiner and the external examiner confer and jointly determine the score totals for the national exam.
- 5 If they cannot reach a consensus, the score totals are determined by way of a mathematical average of the scores proposed by each of them, rounded off upwards if so required.

## 2 General rules

---

As far as evaluation of the exam goes, the following stipulations apply:

- 1 The examiner declares on a list, the candidate names and/or numbers, the scores awarded to each candidate for each question and the total score acquired by each candidate.
- 2 The examiner and the external examiner award scores to the answer to a question in accordance with the appraisal model. Scores are represented by the numbers 0, 1, 2, ..., n, whereby n represents the maximum score attainable for a question. Additional scores, not being a whole integer, or a score being less than 0, are not legitimate.
- 3 Scores are awarded in compliance with the following rules:
  - 3.1 If a question is answered correctly in full, the maximum score attainable is awarded;
  - 3.2 If an answer to the question is partially correct, a portion of the score attainable is awarded, in compliance with the appraisal model;

- 3.3 If the answer to an open-end question does not appear on the appraisal model, while said answer may be deemed correct or partially correct by virtue of demonstrable arguments with regard to subject matter content, scores must be awarded on the analogy or in the spirit of the appraisal model;
  - 3.4 If solely one example, reason, elaboration, quote or answer of a different nature is required, then only (and exclusively) the first-offered answer is evaluated;
  - 3.5 If more than one example, reason, elaboration, quote or answer of a different nature is required, then only (and exclusively) the first-offered answers are evaluated, up to a maximum of the number of answers asked for;
  - 3.6 If a required statement or explanation or derivation or calculation is missing or wrong in an answer, then a score of 0 is awarded, unless the appraisal model indicates otherwise;
  - 3.7 If various options separated by the symbol / appear in the appraisal model, then said options are valid as different phrasings of the same answer or part of the answer;
  - 3.8 If a portion of the answer is bracketed in the appraisal model, then said portion is not absolutely required in the candidate's answer.
- 4 The correct answer to a multiple-choice question is the capital letter that matches the correct choice. For a correct answer to a multiple-choice question, the number of points listed in the appraisal model is awarded. For each other answer, no points are awarded. If more than one answer is given, no points are awarded either.
  - 5 An error in the elaboration of a question may be charged but once, unless said error simplifies the question significantly and/or unless the appraisal model states otherwise.
  - 6 A same-like error in the response to different questions must be charged consistently for each individual case, unless the appraisal model states otherwise.
  - 7 If the examiner or the external examiner is of the opinion that there is an error or discrepancy in an exam or in the appraisal model of said exam, then he evaluates the work as if the exam and its appraisal model were correct. He should, however, report the error or discrepancy to ETE. It is not allowed to deviate independently from the appraisal model. Such errors, if any, will be taken into account when the final marking of the exam is determined by ETE.
  - 8 Points are awarded on the basis of answers given by the candidate to each question. No points shall be awarded in advance.
  - 9 The grade for the national exam is arrived at in the following fashion: The first and second corrector determine the score of each candidate. Said score is conveyed to the principal. The principal determines the grade of the national exam on the basis of standards with regard to converting score to grade. Said grade may be read from conversion tables that are made available by ETE after the final marking of the exam has been established.

### 3 Subject-specific rules

For this Central Written Exam VSBO PBL Biology first period 2025, a maximum of 71 points can be scored. The exam consists of 46 questions.

### 4 Appraisal model

Question	Answer	Scores
----------	--------	--------

*The correct answer to a multiple-choice question is awarded 1 point.*

#### 1 maximum score 3

piece of information	is a life characteristic	is not a life characteristic
temperature of the surroundings		x
feeding with plants	x	
laying eggs	x	
death of the snail		x

*Four rows correct, 3 points.*

*Three rows correct, 2 points*

*Two or only one row correct, 1 point.*

*Zero rows correct, 0 points.*

#### 2 maximum score 2

P: cell membrane Q: cytoplasm R: cell nucleus

*Three names correctly filled in, 2 points*

*Just two or only one name correctly filled in, 1 point.*

*No name correctly filled in, 0 points.*

#### 3 maximum score 1

Chloroplasts

#### 4 C

#### 5 maximum score 2

(1) S, stomach

(2) Q, lungs

(3) P, brains

*Each error, deduct 1 point*

Question	Answer	Scores
----------	--------	--------

**6 maximum score 2**

letter	name of part
P	(renal) cortex
Q	(renal) pelvis
R	(renal) medulla

*Three names correctly filled in, 2 points.  
Two or only one name correctly filled in, 1 point.  
No names correctly filled in, 0 points.*

**7 maximum score 1**

The answer given must indicate:  
waste matters / harmful substances

**8 maximum score 2**

letter	name of the organ
K	kidney
L	gall bladder
M	liver
N	stomach

*Four of three names correct filled in, 2 points.  
Two or only one name correctly filled in, 1 point.  
No names correctly filled in, 0 points.*

**9 B**

**10 C**

**11 C**

**12 maximum score 2**  
peanut → rat → owl

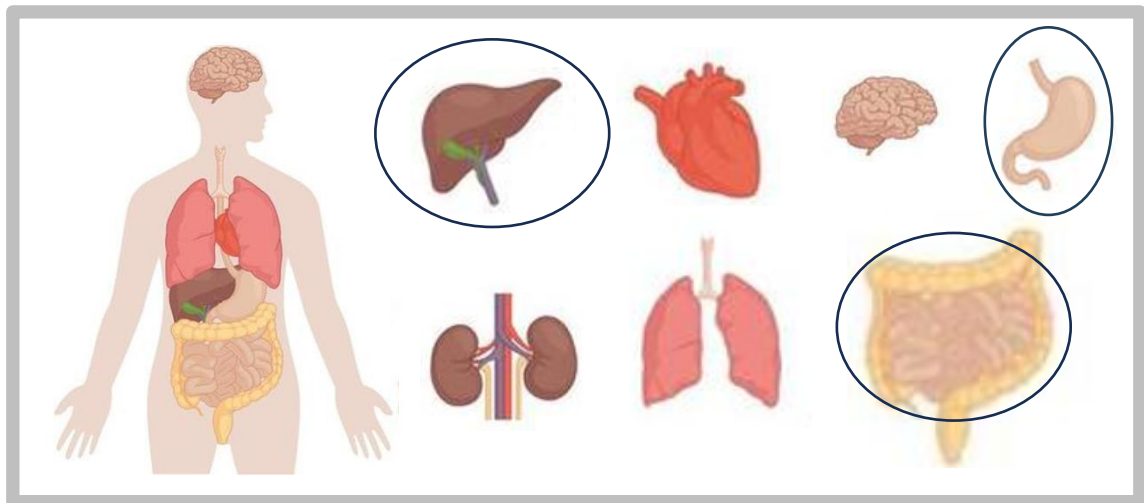
*Food chain with organisms in the correct sequence*  
*Arrows in the correct direction*

1  
1

**13 A**

Question	Answer	Scores
----------	--------	--------

14 maximum score 2



Each error, deduct 1 point.

15 maximum score 2

animal	type of food	group
lion	zebras and deer	carnivores
dog	meat, vegetables, rice, pasta, potatoes, bread	omnivores
goat	grass, leaves, branches	herbivores

Three spaces correctly filled in, 2 points.

Two spaces correctly filled in, 1 point.

Fewer than two spaces correctly filled in, 0 points.

16 maximum score 2

task	<i>is</i> a task of the liver	<i>is not</i> a task of the liver
Breakdown of poisonous substances	x	
Production of red blood cells		x
Production of gall	x	

Three rows correct, 2 points.

Two rows correct, 1 point.

Fewer than two rows correct, 0 points.

Question	Answer	Scores
----------	--------	--------

**17 maximum score 2**

Words to be underlined:

small intestine

1

nutrients

1

**18 D**

**19 C**

**20 B**

**21 B**

**22 maximum score 2**

letter	vein	artery
P		x
Q	x	
R		x

*Three rows correctly filled in, 2 points.*

*Two or only one row correctly filled in, 1 point.*

*No rows correctly filled in, 0 points.*

**23 maximum score 1**

letter	have valves	have no valves
A		x
B	x	

**24 maximum score 2**

Blood vessel 1 is called coronary vein

1

Blood vessel 2 is called coronary artery

1

**25 A**

**26 maximum score 2**

Letter is: R

1

Name is: red blood cell(s)

1

*Award each score point independent of each other.*

**27 D**

Question	Answer	Scores
----------	--------	--------

28 B

29 maximum score 2

letter	name of part
P	windpipe
Q	bronchi
R	alveoli

*Three names correctly filled in, 2 points.*

*Two or only one name correctly filled in, 1 point.*

*No names correctly filled in, 0 points.*

30 maximum score 2

To be underlined:

breathing out,

1

can cast out disease-causing germs from the lungs.

1

31 maximum score 2

animal	lungs	skin	gills
salamander	x	x	
lion	x		
frog	x	x	
fish			x

*Three rows correct, 2 points.*

*Two rows correct, 1 point.*

*Fewer than two rows correct, 0 points.*

32 C

33 A

34 A



Question	Answer	Scores
----------	--------	--------

**35 maximum score 2**

name	letter
balance organ	Q
Eustachian tube	S
ossicles	P
cochlea	R

*Four or three names correctly filled in, 2 points.*

*Two or only one name correctly filled in and the rest incorrect or not filled in, 1 point.*

*No names correctly filled in, 0 points.*

**36 A**

**37 maximum score 1**

statement	true	false
The corneous layer protects the body against disease-causing agents.	x	
Regulation of body temperature takes place in the corneous layer.		x

**38 maximum score 2**

(1). stimuli, (2). impulses and (3). central nervous system.

*Each error, deduct 1 point.*

**39 maximum score 2**

The thyroid gland is indicated by the number **2** .

The adrenal glands are indicated by the number **3** .

The testicles are indicated by the number **5**.

*Three numbers correctly filled in, 2 points.*

*Two or only one number correctly filled in, 1 point.*

*No numbers correctly filled in, 0 points.*

Question	Answer	Scores
----------	--------	--------

**40 maximum score 2**

number	name of part
1.	<b>seminal vesicle</b>
2.	<b>prostate</b>
3.	<b>sperm duct</b>
4.	penis
5.	<b>epididymis</b>

*Four or three names correctly filled in, 2 points.  
Just two or only one name correctly filled in, 1 point.  
No names correctly filled in, 0 points.*

**41 maximum score 2**

(1). scrotum                      (2). sperm cells                      (3). epididymis

*three names correctly filled in, 2 points.  
Just two or only one name correctly filled in, 1 point.  
No names correctly filled in, 0 points.*

**42 maximum score 3**

1). Experience of pleasure	1
2). Reproduction	1
3). Love	1

**43 maximum score 2**

sequence	<i>first</i>		<i>second</i>		<i>third</i>		<i>fourth</i>
letter	C	→	A	→	B	→	D

*Totally correct, 2 points.  
Only three consecutively in the correct sequence, for example:  
ABDC or DCAB, 1 point.  
CABD, also 1 point.  
Other sequences, 0 points*

**44 A**

**45 D**

**46 maximum score 1**

The answer given must indicate:  
Pollination / spreading of pollen.